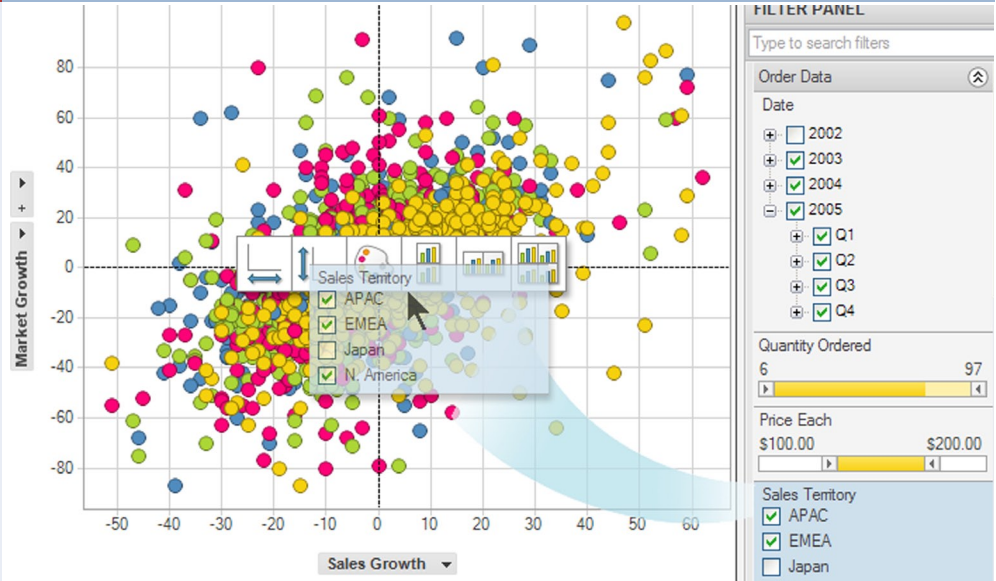


TIBCO Spotfire Enterprise Analytics Platform



For over 10 years, TIBCO Spotfire next generation BI platform has given the Global 2000 a competitive advantage in application areas from sales and marketing to financial analysis to research and development. A unique combination of powerful analytics and an engaging, video-game-like user experience allows over 80,000 users to gain new insights into their information every day.

Challenges with Business Intelligence

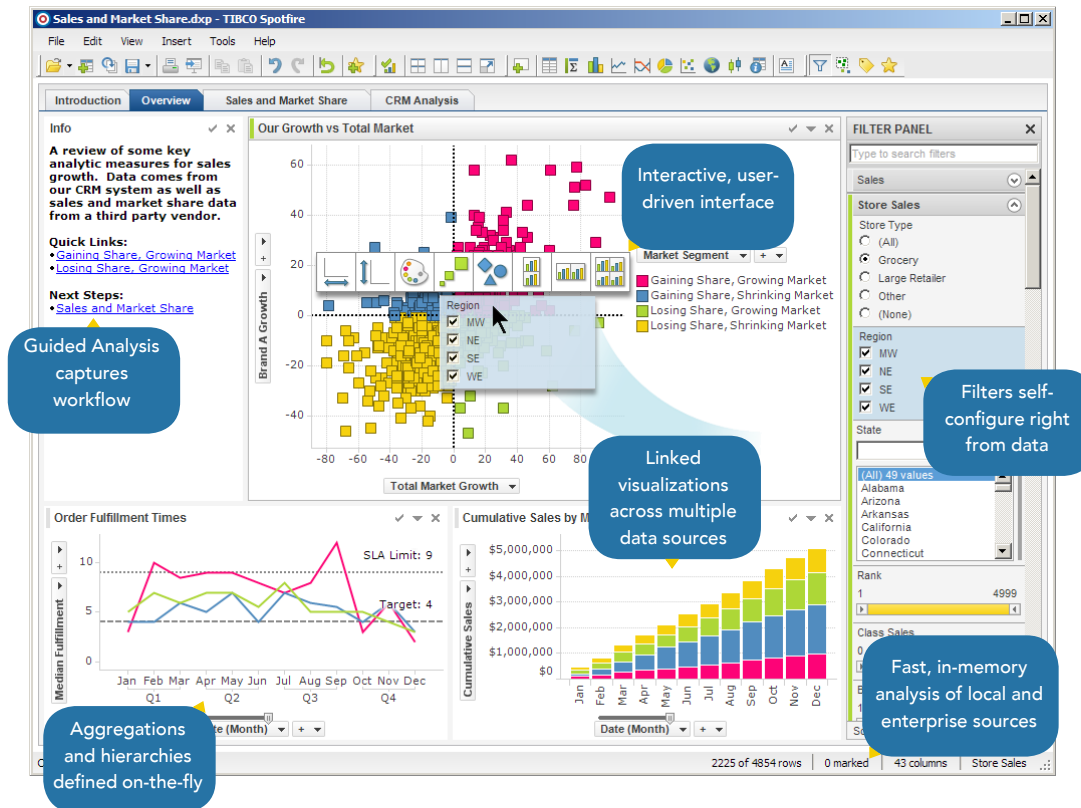
Despite most companies' investments in business intelligence (BI), when business users need to answer new questions and analyze new data, they often resort to copying data into spreadsheets or are forced to wait for new reports from IT. Meanwhile, IT professionals are hard-pressed to keep up with end users' demands, especially given corporate mandates to reduce costs and enforce data relevance and security.

The Solution

TIBCO Spotfire® software equips all employees to answer their own questions of any data in seconds. In-memory processing gives instant answers and frees up IT cycles typically spent building new reports and reconfiguring cubes, while a unique, visual and interactive approach to analysis reveals new insights into data. And unlike traditional BI systems, Spotfire® is completely adaptable to business processes across the organization, giving IT an extensible BI platform, and allowing them to reduce the number of custom and packaged applications they must support.

The Enterprise Analytics Platform

TIBCO Spotfire enterprise analytics platform meets the needs of all users from ad-hoc analysis, to interactive reporting and dashboards, to domain-specific applications. It integrates with existing enterprise data sources and security models, and provides IT with a centralized means to administer and deploy analytics across the enterprise.



User-driven Analytics

TIBCO Spotfire software's patented, visual and interactive approach to analysis is light years ahead of traditional reporting and dashboard systems, enabling business users to answer new questions in seconds.

- A self-configuring, in-memory data engine creates filters, hierarchies and aggregations right from the data- without cubes or programming
- Dynamic, linked visualizations immediately reveal hidden trends and outliers across multiple data sources
- A highly responsive, drag-and-drop user interface gets users up and running in minutes

Interactive Reporting and Applications

With Spotfire enterprise analytics, business users can create and publish new analytic applications and interactive reports in minutes, sharing their findings and enabling other business users to gain their own insights.

- Instant and secure publishing of any analysis as a dynamic dashboard, with no separate tools or programming
- Analyses, dashboards, and applications made available to large numbers of users as interactive, AJAX web applications
- Applications can be embedded into corporate portals or used to build new business mashups
- A single, adaptable user interface consistent from analysis to reporting to applications

Simplified Data Access, Distributed Processing

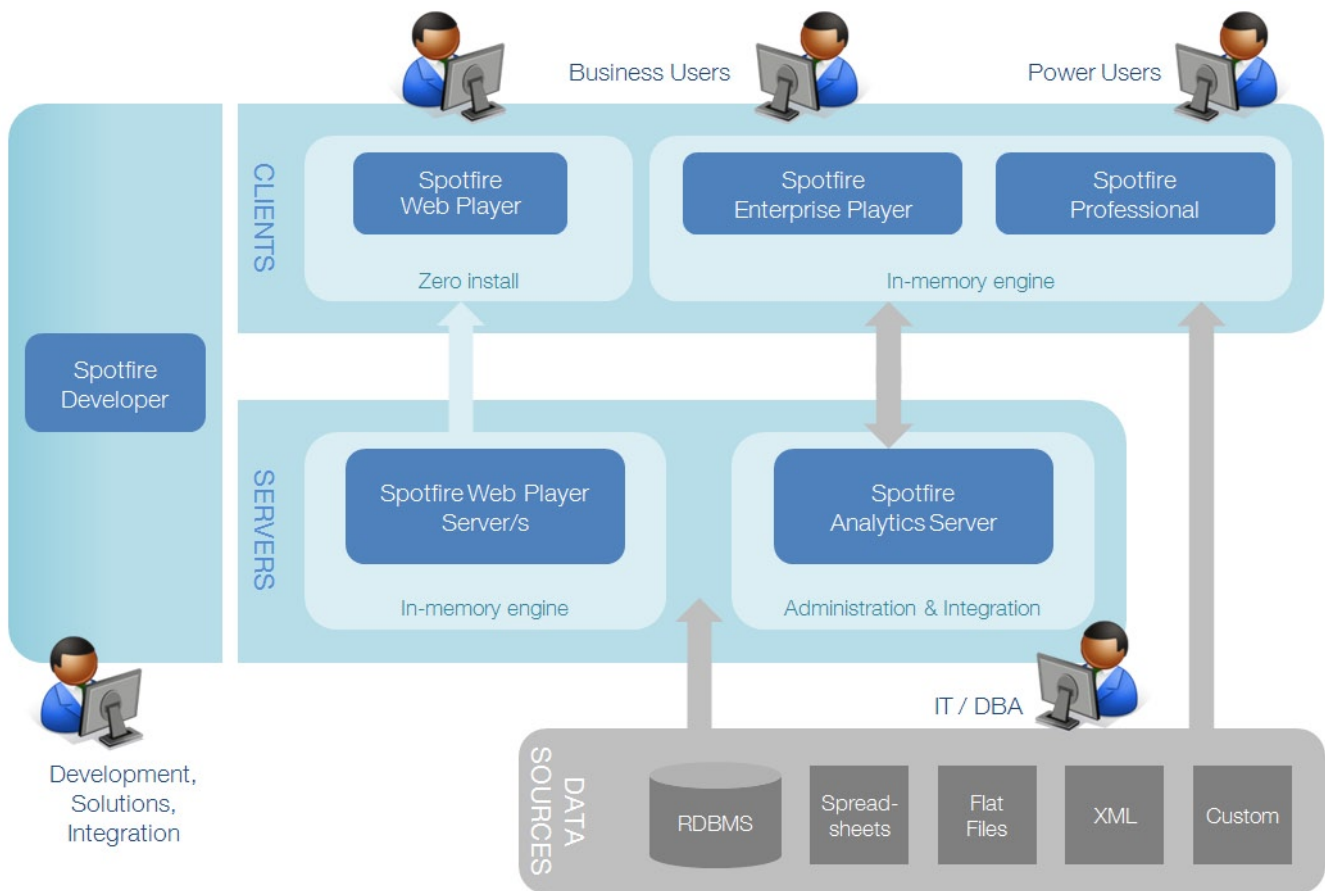
With Spotfire software, end users can access both local and enterprise data sources in the same analysis. And, a flexible, in-memory architecture allows the option of processing data on either desktop client CPUs or central servers.

- Drag-and-drop access to local sources such as spreadsheets, flat files, and custom sources
- Unified, server-side access to enterprise data sources
- Desktop clients leverage local CPU and memory for online and offline analysis
- Web clients receive only HTML and images, keeping data securely on the server

Centralized Administration and Deployment

TIBCO Spotfire® Analytics Server provides centralized administration of end user access rights and client configurations, making it a breeze to deploy analytics across the enterprise.

- Role-based access to data and functionality maps to existing security infrastructures
- Highly extensible platform with C# development kit and over 5000 published APIs
- Desktop clients remotely updated from server, including deployment of custom extensions



TIBCO Software Inc.

(NASDAQ: TIBX) is the leading independent business integration software company in the world and a leading enabler of real-time business, helping companies become more cost-effective, more agile and more efficient. TIBCO has delivered the value of real-time business, what TIBCO calls The Power of Now[®], to thousands of customers around the world and in a wide variety of industries.

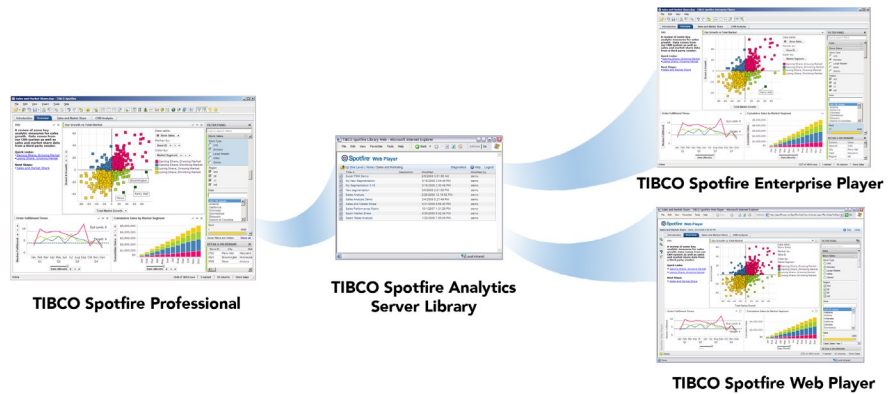
<http://spotfire.tibco.com>

Spotfire,
A Division of TIBCO Software Inc.
212 Elm Street
Somerville, MA 02144

Tel: +1 617 702 1600

+1 800 245 4211

Fax: +1 617 702 1700



TIBCO Spotfire[®] Professional

Makes comprehensive analytics fast and easy for a variety of business analysts and users, allowing them to:

- Perform compelling ad hoc analyses, accessing multiple back end and local data sources
- Easily publish analytic applications and reports instantly to colleagues, partners or customers using TIBCO Spotfire Web Player or TIBCO Spotfire Enterprise Player

TIBCO Spotfire[®] Web Player

The zero-footprint web interface makes it easy and instantaneous to share content and insights with broadly dispersed colleagues, customers and business partners.

- View and navigate configured analysis workflows, with no software or plug-ins installed
- Answer new questions with remarkable interactivity and visual clarity, way beyond today's static reports
- Embed analyses in a corporate portal or integrate with other web applications to create business mashups

TIBCO Spotfire Enterprise Player

Easily deploy rich, interactive analysis applications and workflows throughout the enterprise.

- Follow analytic applications and interactive
- reports using a simplified user interface
- Interactively answer new questions using filtering, visualizations, custom-developed tools, and more.
- Work with applications offline or online

TIBCO Spotfire[®] Analytics Server

Provides the enterprise with a centralized platform for integration, deployment, and administration.

- Control over configuration, deployment, and security, leveraging existing security infrastructure
- Provide secure, streamlined end user access to existing corporate data sources
- Secure publishing and distribution of analytic applications

TIBCO Spotfire[®] Developer

A complete set of application programming interfaces (APIs) that allow developers to:

- Integrate and automate the platform, as well as extend it with entirely new custom tools and visualizations and more
- Develop code using Microsoft Visual Studio .NET then deploy to end users in a seamless way

TIBCO Spotfire Analytics Solutions

Get a rapid return on investment and increase productivity

- Using preconfigured analytic workflows, tools and predefined data integration models
- Leveraging best practices for a variety of business processes and industries, such as portfolio and asset management, high-tech manufacturing, and more

TIBCO Spotfire Professional Services and Support

Take advantage of over 10 years experience in analytic best practices and custom solution development, plus world-class support.

- Enable everyone with IT workshops, advanced analytics and end user training
- Learn with web-based, regional, or on-site training
- Depend on phone support personnel in Europe, USA and Japan for fast response times.